

My paper of cs 605 is:

Mcqs were mostly in past papers and must read the first and second lec for mcqs.....

- 1: why we need metrics? 2 marks
- 2: Degree of Rigor? 2 marks
- 3: uses of control chart. 3 marks
- 4: RMMC tasks? 3 marks
- 5: Buy verses build c related tha 5 marks
- 6: if the bugs are fix then what will effect on quality of software? 5 marks

MCQs 70% past ppaers main say thay

how we can use control charts

compartmentalization

business risks

water model tha

ak quote diya hoa tha btana tha k yeh kin 2 cheezon ko zahir kar raha hy

buhat easy tha paper

1:57pm

1. compartmentalization. 3
 2. Effort validation. 2
 3. do you think Flexibility and maintainability is same thing. tell reason. 3
 4. if spoilage is decreasing then what effect on maintainability . 3
 5. Business risks of inventory mangment system. 5
 6. which statements are metric from given below. 5
- total number of employee
total line of codes
errors per thousand lines of code.
2 more i forget
mcqs are mostly new some from past papers

Last semester midterm papers

Aslam o alikum!

Here is my paper,

5 marks ka question tha k kia Buy and Buid ma sy just Buy sufficient ho skta ha?

Aik snario dia hua tha or batana tha k ham project manager hony k hawaly sy aik bara project banany k liy kia steps le gy_____ 5 marks.

is k ilawa, hwww kis ka abrivation ha_____2 marks

Tss ka pucha hua tha jis ma casual, structured or srtics k ragor degrees btani thi_____3 marks.

Measure and Metric ma difference_____2 marks.

Feasibility k any 3 dimensions_____3 marks

is sy ziada ni yad mujy_____

mujy laga tha k paper mushkil ay ga bt paper easy tha bht, objective 50 % past papers sy i.

baki ap ki tiari p depend krta ha, wesly paper bohot easy tha.

BEST Of LucK!!!!!!!!!!!!!!!!!!!!

my cs605 paper

20 mcqs

- 1.control chart related Q if 8 consecutive value lies on one side of Am then project condition?
- 2.define compartmentalization?
- 3.measure and metric and their defference
- 4.define feasibility assessment
- 5.buy verses build

Uzma Kanwal CS605-Software EngineeringII mid term paper 7-06-2014 10:30

Mcqs: moaz ma say kam he thay zada tar new thay but easy thay saray handouts may say thay

Subjective:

1. 1 benefit of risk Exposure. 2 marks pg 89
 2. Need of metric for software quality 2 marks pg 66
 3. Defect per function point = 25 is it metric or measure xplain 3 marks pg 65
 4. 4 factors of usability 3 markspg 67
 5. Interdependency 5 markspg 92
 6. U r PM and there are many small task to achieve the goal of a big project what will be ur strategy some like that. 5 marks pg 92 read the paras and write in own wordings.
-

1. 1 benefit of risk Exposure. 2 marks pg 89

Ans: it is used for identification of top risks and mitigation strategies.

1. Need of metric for software quality 2 marks pg 66

Ans: we can know about s/w quality by measuring it. Defect per FP is 1 metric. means the size and defect is one metric.

1. Defect per function point = 25 is it metric or measure xplain 3 marks pg 65

Ans: Defect per function point are 1 metric not measure. Measure is the size of a product.

1. 4 factors of usability 3 markspg 67

Ans: 1. physical or intellectual skill required to learn the system.

2. the time required to become moderatly efficient in the use of the system.

3. The net increase the productivity.

4. A subjectiv assessment.

1. Interdependency 5 markspg 92

Ans: the other task which is performed is dependent on the an other task for project planning.

1. U r PM and there are many small task to achieve the goal of a big project what will be ur strategy some like that. 5 marks pg 92 read the paras and write in own wordings.

Ans: not full question.

today paper n all past paper in 1 file

CS605
Date 14-12-2012

Question No 1:

What is meant by Risk Projection?

Question No 2:

Can we count a single logical file of both EIF and ILF for same application?

Question No 3:

Discuss the role of interdependency and time allocation to fulfill a realistic project schedule?

Question No 4:

Consider the following graph?

See the graph and notify us product is stable or not

Question No 5:

$N_f = 25$, $N_{if} = 5$ and $N_{ui} = 10$

Calculate the lack of ambiguity in the given requirement

Question No 6:

Discuss some of the factors that will be considered when deciding about whether to develop the project from scratch or from 3rd party components (off the shelf software)

2MCQS aye thy past paper main se thy baqi sab new thy

Can we count a single logical file of both EIF and ILF for same application?

Define "baseline data"?

quick reaction?

5 marks aka question tha aik table given tha os ko calculate karna tha and define karna tha?

5 marks ka question tha agr apko apna softwaatr bnana ho VULMS ka our virtual university apko project manager bna day tu kon se technical risks project main apko face karny par skty han wo define karny thy?

baqi muje yad nhi

MY TODAY PAPER OF CS 605

Mostly MCQ's are from risk and paradigm

1. feasibility assessment.

2. compartmentalization

3. usability

4. identify build and buy by using formula

DONT PREPARE MCQS FROM MOAZ FILE PREPARE UR MCQS FROM QUIZ

mcqs from past moaz file , about 13 14 ,

and subject was , **compartmentalization**,

as project manager , if u dont have historical data and you have to make a new project first time , how will you make without past experience , what will the **scope of estimation**?

ILF and ELF related two question one was 2 marks and other was 3 marks ,

one figure was given , what you will select the **build or buy ? 5 marks**

abbreviation of TSS , TASK SET SELECTOR,

jo k men wron likhi time set selecter

my today cs605 paper .

total 26 question thy 20 mcqs and 6 subjective thy .

MCQs past main se ak bi nai tha bt easy thy

Q1: Give any two characteristics of risk? 2 marks

Q2: In context of function points which elementary process sends data or control information outside the application boundary? 2 marks

Q3: Discuss some uses of control charts? 3 marks

Q4: For a certain project the value of TSS set selector TSS was 2.6, so as for TSS values the degree of rigor for this project falls both in structured as well as in strict categories. Now the project manager can select the degree of rigor for this project? 3 marks

Q5: Using the work accomplished formula in context of relationship between people and effort prove that the work accomplished by team of seven (7) people will be less than the work accomplished by the team of four (4) people when the communication overhead per channel is 5% ? 5 marks

Q6: Calculate the lack of ambiguity? 5 marks

Nf=25 , Nnf=5, Nui=10

MY TODAY PAPER OF CS 605:

Total questions=26

Objective part=20 mcqs

Subjective part=6 questios

1. In _____ team organization, there is no permanent leader rather there are task coordinators.

Controlled Decentralized

Democratic Decentralized (Page 32)

Controlled Centralized

Synchronous paradigm

2. _____ procedures include QA activities, design and code review, and status meetings.

Formal, interpersonal (Page 33)

Informal, interpersonal

Controlled centralized

Formal, impersonal

3. _____ is the ability to encourage technical people to produce to their best.

improvement

motivation (Page 30)

innovation

creation

4. After building the Decision Tree, following formula is used to find the expected cost for an option. Choose the correct formula:

Expected Cost= (path probability)ⁱ * (estimated path cost) (Page 83)

Expected Cost= (path probability)ⁱ / (estimated path cost)

Expected Cost= (path probability)ⁱ + (estimated path cost)

Expected Cost= (path probability)ⁱ - (estimated path cost)

5. The extent to which a program satisfies its specification and fulfills the customer's mission objectives is said to be achieving the

Usability

Efficiency

Reliability

Correctness

6. MMTC is the abbreviation of

▶ measured time to change

▶ mean time to collaborate

▶ **mean time to change** (Page 68)

▶ measure time to cope

7. In _____ team organization, there is no permanent leader rather there are task coordinators.

Controlled Decentralized

Democratic Decentralized (Page 32)

Controlled Centralized

Synchronous paradigm

8. In measuring Software Process Quality by using control charts, if the gap between the defects reported and defects fixed is increasing, then it means

Select correct option:

The product is in unstable condition.

The product is ready for shipment

The product is in stable condition.

None of the above

9. An _____ is a user identifiable group of logically related data or control information referenced by the application.

Select correct option:

EIF

Object

ILF

Item

10. The purpose of the feasibility analysis is to determine can we build software to meet the scope? For this purpose, the project is analyzed on the following 4 dimensions:

Technology, Finance, Time, Resources (correct option)

and the subjective part was:

1. The degree of rigor can also be categorized as Casual, Structured, Strict, or Quick Reaction. Elaborate any two. 3 marks

2. Write the advantages of "baseline data"? 3 marks

3. Can we guarantee 100% risk free software development i.e. can we develop a software without risk by following some software procedure? Comment it. 5 marks

4. Write two drawbacks of reactive risk. 2 marks

5. What is an elementary process that sends data or control information outside the application boundary? 2 marks

6. One question was from RET ?

Cs605 paper today

Most of MCQs were from Muaz file and from statement in the handout.

Question No. 21..(Marks=2) How can we develop Moving Range Control Charts from a given Graph.

Question No. 22..(Marks= 2) Discuss Effort Validation.

Question No. 23..(Marks= 3) Is the Maintainability improving in the given graph (A graph was given having multiple bars of spoilage and project cost for October, Nov, Dec. where project cost was constant at 300 and Spoilage decreased from 300 to 250 to 200.)

Question No. 24..(Marks= 3) Which techniques will you use to measure scope of project when historic data is not available.

Question No. 25..(Marks= 5) For given value of DI(degree of influence) and UFP (Unadjusted Function Point) , calculate FP Count. (Page =64)

Question No. 26..(Marks= 5) Describe two situations in which to buy decision is better than to build decision. (Lecture 17)

Q.No21. What would be the implications if we had no metrics in software development?

2 Marks

Q.No.22. Describes FAST technique briefly? 2 Marks

Q.No.23 Sorry 3 Marks

Q.No.24. Do you think that macroscopic schedules are sufficient to a schedule a project they should be further refined up to lower level? 3 Marks

Q.No.25. Identify the metrics from the following list and also specify reason for your selection.

- 1) Project size
- 2) Number of developers
- 3) Bugs per function point
- 4) Number of test cases executed
- 5) Number of test cases developer thousand line of code. 5 Marks

Q.No.26. From the following graph (for certain component compute and determine that either we should build or buy it. 5 Marks

My today paper (12-06-2014 08:30am)

Only 8 mcq's were from past paper and other were new.

Subjective portion

1. How can we implement metric in small organization? 2 marks
2. Two advantages of risk. 2 marks
3. Using metric can be quite expensive and extensive , so small organization s may find it difficult to implement. Do you agree or not. Give reason 3 marks
4. Historic data is not available then which technique will be use for project. 3 marks
5. Using the work accomplished formula in context of relationship between people and effort prove that the work accomplished by team of seven (7) people will be less than the work accomplished by the team of four (4) people when the communicate overhead per channel is 5%? 5 marks
6. Do you think the use of statistical control technique like the one given by Walter Shewart is valid in domain like software engineering. 5 marks

Remember me in your prayers.

If u really want to help other VU students then plz share your current paper here

my todays cs 605 paper

no mcq from past papers all mcqs are new bit little easy

subjective:

explain the degree of rigior and its 4 factor.

some advantages of control charts.

external output ko define krna tha .

ak 5 marks ka question tha jis me table diye hoye thy ... system complexity find krni the by using formula.5. Using the work accomplished formula in context of relationship between people and effort prove that the work accomplished by team of seven (7) people will be less than the work accomplished by the team of four (4) people when the communicate overhead per channel is 5%? 5 marks

RMMM ko define krna tha .

best of luck to all nd remember me in ur prayerz

mcq's from past papers .

total 26 questions thy.

20 mcqs

6 questions

1) lack of ambiguity values given the just formula put karna tha 5 marks

- 2) compartmentalization ka question tha about vu high level of abstraction 5marks
3) any two characteristics of risks. 2 marks
4) aik functional points sy related question tha 3 marks ka
or baki yad ni han
overall papers was very easy..
-

Today My Paper By Ajmal

20 MCQs

6 Questions

25% objective from past paperz.

Q.1 what do you mean by Risk?

Q.2. Differentiate between Optional and Mandatory RET?

Q.3. if there is TSS 2.6 then project manager will choose which Structure or Static category? Also give reasons.

Q.4. Graph given tha spoilage and cost ka jis me cost constant thi but spoilage decrease ker rahi thi us me betana tha ke maintainability increase ker rahi ha ya nai and reasons bi deni thin.

Q.5. Risk ke factors betany thy jin pe Project Manager ko Nazar rakhni chaia?

Q.6. Forgt.

My today's paper of cs605.....

MCQs was easy....

Q.1 Assessment of risk impact is no-trivial. why? __ (2)

Q.2 Give any two quality factors related with revision phase of software? __ (2)

Q.3 Proactive __ (3)

Q.4 Suggest some reasons to baseline the data. __ (3)

Q.5 Calculate FP, DI & UFP was given __ (5)

Q.6 Compute and determine that either we should build or buy it. graph was given. __ (5)

Mine paper:

1. Why quick reaction rigor is not the good activity performed? Also mention the situation in which quick reaction rigor is suitable. (lec 22)5 Marks

2. What role Risk Mitigation , Management (RMMM) does play in developing strategy for dealing with risk. (3 Marks)

3. For a certain project calculate function point for which:

DI=45

UFP =2 (5 Marks)

4. Discuss the concern of risk analysis and management. -----2 mrks

5. Consider the statement:

" Defect per function point is 25".

Is Defect per function point a measure of metric? Justify your answer. (3 Marks)

6. What can be the implication if the feasibility report is not generated correctly? (2 Marks)

7. List at least two advantages of good metric system. (2 marks)\

Quiz was easy.

bye

My today's paper

Mcqs were new and subjective is down below:

How can we use metrics?

Metrics are quite expensive and extensive how can we use it in small organization?

Differentiate between reactive and proactive and describe which is better approach?

One question is from risk management?

Mine today ppr

MCQs 90% frm past

All da bxt nd pray fr me

Q one advantage of "base line data"

Q two disadvantgs of rev.smthng.. risk evaluation

3-marks

Q write 3 business related risks of inventory managment system

Q Is metric program can be quite complex and extensive for small firm? give reasons.(pg 72 of handouts)

5 mrks

Q Development of VU lms ..comparmentalize the product as a project manager . ONLY comartmentalise the product not process

Q ik HRM wla tha employee k RET salary and hourly wala .. shaid ..past s

aslam o alikum someone plz answer these questions and share more paper

Q one advantage of "base line data"

Q two disadvantgs of rev.smthng.. risk evaluation

3-marks

Q write 3 business related risks of inventory managment system

Q Is metric program can be quite complex and extensive for small firm? give reasons.(pg 72 of handouts)

5 mrks

Q Development of VU lms ..comparmentalize the product as a project manager . ONLY comartmentalise the product not process

Q ik HRM wla tha employee k RET salary and hourly wala .. shaid ..past s

My paper of software engineering2 (cs605) held on 20-06-2015.

10 mcqs were from moaaz file and 10 were from book.

Long questions:

1.List at least one advantage of "base linning the data"? 2marks

2.Assessment of risk impact is non trivial process? Why. 2 marks

3. Using metrics can be quite expensive & extensive. So small organizations may find it difficult to implement. Do you agree or not. 3 marks

4.For inventory management system, identify at least three business related risks. 3 marks

5. Do you think the buy approach always works as compared to build approach? Provide your answer with reasons. 5 marks

6. For a certain project, after testing, a large number of defects reported were resolved as 'not-a-defect'. From the above statement can we say that there is a problem with both teams(testing team & development team) in requirement specification interpretation. Provide reason(s) in each case? 5 marks

y today paper

9 mcq's were from moaaz file and subjective is

Question:The frequency of ripple defects is too large then what its impact on the project?

Question: Can we count a single logical file of both EIF and ILF for same application?

Question: Difference b/w generic and product specific risks

Question: Define the Risk concern of analysis and management?

Question: Development of VU lms ..compartamentalize the product as a project manager . ONLY comartmentalise the product not process

my today paper

MCQs moaaz ki file sy just 3 aye and baki sb handout me sy thy

Q1: Discuss following risk management philosophies

1: reactive

2: proactive (2 marks)

Q2: list at least one advantage of "baseline data" (2 marks)

Q3: consider the following statement

Defect per function point = 25

here "Defect per function point" is a measure or a metric?? justify your answer in both cases (3 marks)

Q4: do you think that buy approach is always works as compare to build approach prove your answer with solid reason (marks 5)

Q5: N_f = functional requirements = 25

N_{nf} = non-functional requirements = 5

N_{ui} = number of requirements for which all reviews had identical interpretation = 10

you are required to calculate "Lac of ambiguity" (5 marks)

Anyone give answer of these questions

Q: 1

$N_f = 25$, $N_{nf} = 5$ and $N_{ui} = 10$ Calculate the lack of ambiguity in the given requirement

Q: 2

how can we develop individual control vu solutions dot com chart using moving range Control chart? 3 marks

Q: 3

Give appropriate RETS for a situation 5 marks In a human resource management an employee is -

Employee

Permanent

Contract –

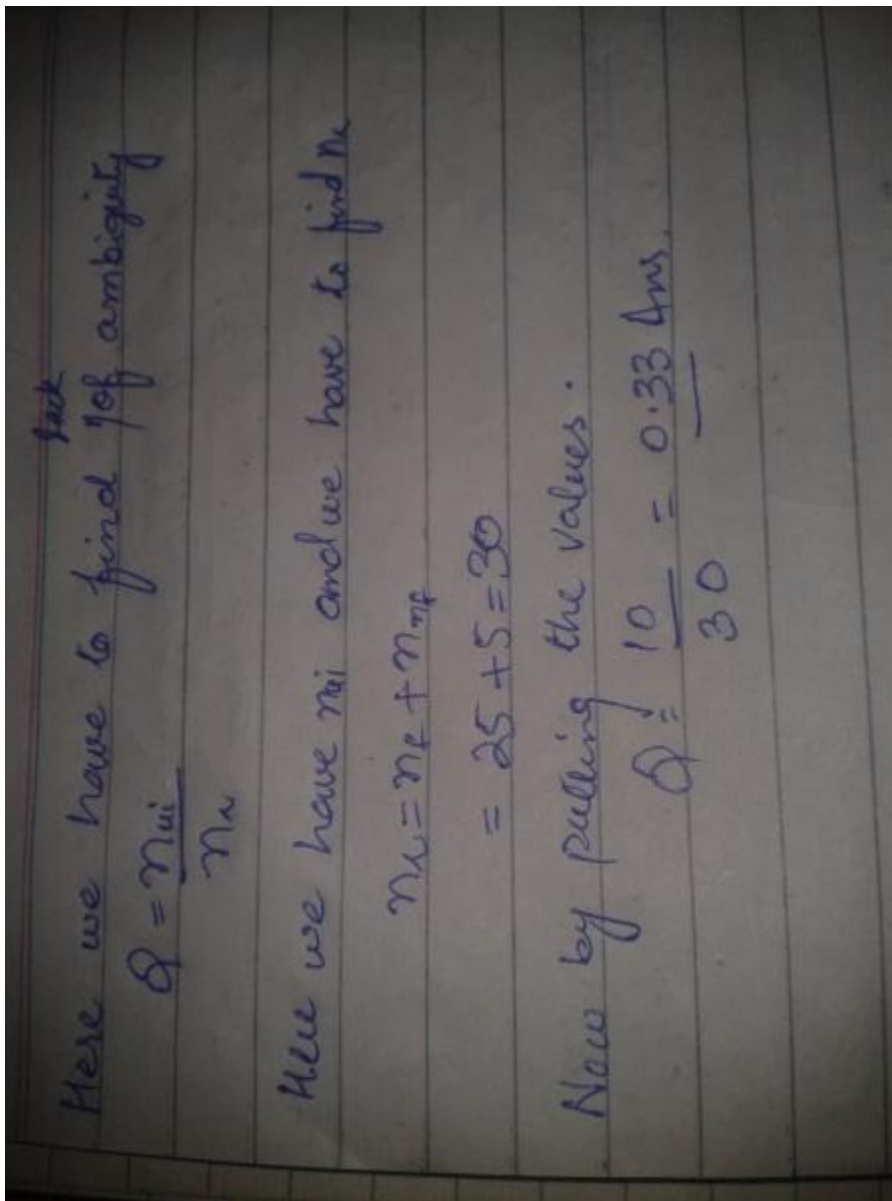
Employee

Married

Single

Q: 4

in order to assess overall project risks, which questions need to be asked (Any Five) ?



My today's exam of CS605 1-20-2015

20 mcqs from mostly were from moaaz's file.

6 subjective questions

HOW CAN WE USE METRICS FOR SMALL ORGANIZATION ?(2)

relation between people and time of development process are not linear, what does it mean? (2)

Do you agree with the statement that ILFs and EIFs are both user identifiable group of data? Comment it. 3 marks

Define Compartmentalization with context of project schedule. (marks 3)

is it good for an organization to use application of other organizations for measuring its own product quality and process? describe (marks 5)

Can we guarantee 100% risk free software development i.e. can we develop a software without risk by following some software procedure? Comment it. 5 mark

overall paper was so easy..

CS605 Current Midterm Papers Fall 2014 - 2015 Starting from Monday, January 12, 2015

mcq's from past papers .

total 26 questions thy.

20 mcqs

6 questions

- 1) lack of ambiguity values given the just formula put karna tha 5 marks
 - 2) compartmentalization ka question tha about vu high level of abstraction 5marks
 - 3) any two characteristics of risks. 2 marks
 - 4) aik functional points sy related question tha 3 marks ka
or baki yad ni han
- overall papers was very easy..

Assessment of risk analysis is non trivial why.

Count FP UFP N DI were given.

React'ive n proactive approach.

Risk mitigation question

How to measure quality of requirements specifications document.

Objective was easy

Today Paper (24-jun-2015)

Mcqs 50% from moaz file

Q1- writes 1 advantage of base lining data

Q2- Define Rigor and its parts

Q3- base line data

Q4- writes advantages of feasibility assessment.

Q5- After handover software defects occurred; it's a problem of development team and testing team, give reason.

Q6- Diagram with value was given (identify the build or buy).

Today Paper @ 12:30 PM.

MCQs 10 of 20 from past, other 10 were easy.

::

Subjective:

- 1). Give one advantage of baseline data? 2
- 2). Why is it necessary to use Baseline in our data? 3
- 3). Explain Risk Analysis and Management? 3
- 4). Calculate EXposure. Also tell which are two risks have high exposure. 5

	Probability	Cost
Technical Risk	50%	1000
Business Risk	30%	2000
xxxxx Risk	10	500

- 5). Suppose in a software manufacturing company, a number of defects have been sent for testing and after testing most of the defects are not-a-defect. Whose problem is this the Development Team or the Testing Team. Give reason in context of both teams. 5

My today's paper

Q:Atleast one advantage of statistical control techniques of software engineer.(2)

Q:What will be the implication if the result of the feasibility report is not correct?(2)

Q:On was from RET..(3)

Q:one was scenario based..(3)

Q:This question was to separate the mandatory and optional FP (list was given)(5)

Q:Calculate Exposure. Also tell which are two risks have high exposure.(5)

	Probability	Cost
Technical Risk	50%	1000

Business Risk	30%	2000
Project Risk	10%	500

kisi k pass is question ka ans hai tu plzzzzz share kar dain

Q: Calculate Exposure. Also tell which are two risks have high exposure. (5)

Probability

Cost

Technical Risk

50%

1000

Business Risk

30%

2000

Project Risk

10%

500

Aslam o alikum!

Here is my paper,

5 marks ka question tha k kia Buy and Buid ma sy just Buy sufficient ho skta ha?

Aik snario dia hua tha or batana tha k ham project manager hony k hawaly sy aik bara project banany k liy kia steps le gy_____ 5 marks.

is k ilawa, hwww kis ka abrivation ha _____ 2 marks

Tss ka pucha hua tha jis ma casual, structured or srtics k ragor degrees btani thi _____ 3 marks.

Measure and Metric ma difference _____ 2 marks.

Feasibility k any 3 dimensions _____ 3 marks

is sy ziada ni yad mujy _____

mujy laga tha k paper mushkil ay ga bt paper easy tha bht, objective 50 % past papers sy i.

baki ap ki tiari p depend krta ha, wesey paper bohot easy tha.

BEST Of LucK!!!!!!!!!!!!!!!!!!!!

Today CS605 Midterm Term Paper

Total Question = 26

Total Mcqs of 1 marks of each = 20

Total 2 Marks Question = 2

Total 3 Marks Question = 2

Total 5 Marks Question = 2

Q: What do you understand by the term Risk?

Risk is the situation that can be defiend as what can go wrong it is the possiblity of loss

Risk may or may not happen this is uncertaintiy of Risk but when risk occur or it becomes reality then loss may occur

Q: What is RMMM Stands for ?

Ans :

it stands for Risk Mitigation , Monitoring and Management.

Q: What if as a PM while developing a software you encounter a situation when ripple frequency becomes too large then what will be its effect on software quality ?

Ans : Software Quality assurance is really very important in this situation when ripple frequency becomes too large then there will be effect of tight coupling (tight coupling will be present) so the software will become unmaintainable and in rhat result software quality may decrease

Q: What is the major difference between Rapid Prototyping model and RAD model ?

Ans : RAD model is applicable when requirements are fully understood and certain and Rapid prototyping model is applicable when requirements are uncertain.

Q :Define Schedule Risks

Ans : The degree of uncertainty that schedules are maintained

Q: Write uses of Control Charts

Ans : Control charts are statistical technique used to determine the process is in control or out of control

my cs605 paper

20 mcqs

1.control chart related Q if 8 consecutive value lies on one side of Am then project condition?

2.define compartmentalization?

3.measure and metric and their difference

4.define feasibility assessment

5.buy versus build

aik Q bhool gayi

My today paper

Suppose a project consists of three components i.e. Login-Component, Filter-Component, Transfer-Component. Calculate the overall project's system complexity from the following data:

Component	Structural complexity	Data complexity
Login Component	1	1
Filter-Component	2	1
Transfer-Component	1	1

For a project consider the following data:

	Probability	Cost to correct
Technical Risk	50%	1000\$
Business Risk	30%	2000\$
Support	10%	500\$

Calculate the Risk Exposure for all the risks mentioned above and identify the top two (2) risks with respect to Risk Exposure.

What role "Risk Mitigation, Monitoring, and Management (RMMM)" does play in developing strategy for dealing with risks

Does software quality depend only on the source code? Comment on it.

How increasing the size of team decreases the productivity of the development team?

Give any two quality factors related with adaptation phase of software.

My Today's Paper

Paper was not from past paper! But easy and conceptual..

Mcqs 20: Almost new, but easy!

Subjective:

Q1: List at least one advantage of using statistical in software engineering? (Marks 2)

Q2: How increasing the size of team decreases the productivity of the development team? (Marks 2)

Q3: Does software quality only depend on source code? (Marks 3)

Q4: Being a project manager, you need to identify the scope of certain project, but this type of application is taken first time by your company, so there is no historic data to help you to estimate out the scope. what the other technique you will use in this situation to measure the scope correctly? (Marks 3)

Q5: Do you think the use of statistical technique control like the one given by walter shewart is valid (from accuracy point of view) in domain like software engineering? give your comment? (Marks 5)

Q6: The reality of the technical project is hundred of small task which must occur to accomplish a large goal. what are the project manager objective for such project? (Marks 5)

today mine paper

mcqs like Ief diffination

what software engineer do primaily

mmtc stands for

and subjective like

q2: why engineer for collect use measure

q2: what happen if their is no subgroup in IEF OR IFE

q3: as a project manger if their is no option for heroic scope to measure then what technique you use

q: proactive and reactive you are in which favour

My today's paper

5 mcqs from CMM

2 from water fall

2 from LOC

Build and Fix model is a __Haphazard_____ type of software development activity.

Mathematical

Perfect

Haphazard

Planned

Degree of uncertainty that the product will meet its requirements and be fit for its intended use is the

Cost risks

Schedule risks

Performance risks

None of the given choices

(Level 1

Level 2

Level 3

Level 4)

en levels ko achi trah dekh lena en mn se 2,3 mcqs ay gy

Q:Atleast one advantage of statistical control techniques of software engineer.(2)

Define Rigor and tell its 4 factor (2)

Build and Fix Model (3)

Do you think the buy approach always works as compared to build approach? Provide your answer with reasons. (5)

one was from HRM of employ salary based monthly and hourly
es ke RTE btani thi (5)

CS605_Midterm_Software Engineering-II Spring 2015 (Held On Dated 29-JUNE-2015)

Total Questions: 26 Total Marks: 40

Objective: 20 marks, Subjective 20 marks

Q.21 Why software engineers collect measures? (2 marks)

Answer: (Page 65)

Within the software engineering domain, a measure provides a quantitative value of some attribute of a process or a product. For example, size is one measure of a software product.

Q.22 Define the term compartmentalization regarding realistic schedule? (2 marks)

Answer: (Page 92)

Compartmentalization

The project must be compartmentalized into a number of manageable activities and tasks. To accomplish compartmentalization, both the product and process are decomposed.

Q.23 Describe reason(s) of feasibility assessment? (3marks)

Answer: (page 81)

Feasibility

The purpose of the feasibility analysis is to determine can we build software to meet the scope? For this purpose, the project is analyzed on the following 4 dimensions:

- Technology
- Finance
- Time
- Resource

Q.24 If the gap between the defects reported and defects fixed is decreasing, then what about the product condition. (3 marks)

Answer: (page 78)

If the gap between the defects reported and defects fixed is decreasing, then it means that the product is in stable condition.

Q.25 You are working as a software engineer in some company, you are asked to develop software. Users are not well experience. Keeping in mind the term “usability”, what factors will you uses? (5 marks)

Answer: (page 69)

Usability is a measure of user friendliness – the ease with which a system can be used. It can be measured in terms of 4 characteristics:

- Physical or intellectual skill required learn the system
- The time required to become moderately efficient in the use of system
- The net increase in productivity
- A subjective assessment

Q.26 Describe project manager’s objectives for large scale project? (5 marks)

Answer: (page 92)

The Project manager’s objectives include:

- Identification and definition all project tasks
- Building a network that depicts their interdependencies
- Identification of the tasks those are critical within the network
- Tracking their progress to ensure delay is recognized one day at a time

Almost 13 MCQ’s from past and mostly subjective from current midterm papers spring 2015

Only 1 question of 2 marks from past

My yesterday CS605 paper

20 mcqs,all were easy and some of them are from Moaz file.

- Q21: Write at least two drawbacks of reactive risk management strategies?(2 marks)
Q: 22 give any two quality factors related with adaption phase of software. (2 marks)
Q: 23 for an inventory management system identify at least three business related risk. (3 marks)
Q: 24 In functional point counting process we know that we count RET for each optional or mandatory subgroups of ILF, EIF, but what happens when there is no group? (3 marks)
Q:25 For a certain project calculate the functional point for following measure ,degree of influence (DI)=45 and unadjusted functional point (UFP)=2. (5 marks)
Q:26 Can we ensure 100% risk free software i.e can we guarantee that during software development there will be no chance of risk? (5 marks)
-

My friend's yesterday cs605 paper

20 Mcsqs.all easy and mostly from moaz file

- Q21: Write at least two drawbacks of reactive risk management strategies?(2 marks)
Q: 22 Do you agree both ILF and EIF recognizable logical group of data (2 marks)
Q: 23 Being a project manager to identify the estimate writes the scope of a certain project. (3 marks)
Q: 24 in functional point counting process we know that we count RET for each optional or mandatory subgroup of ILF, EIF, but what happens when there is no subgroup group? (3 marks)
Q: 25 Find lack of ambiguity .values were given.(5)
Q: 26 The reality of technical project is hundreds of small tasks, which must occur to accomplish a large goal what are project manager.(5) objectives?
-

CS605 Current Midterm Solved papers 20 Dec to 1 Jan 2013

Here is my paper,

5 marks ka question tha k kia Buy and Buid ma sy just Buy sufficient ho skta ha?

Aik snario dia hua tha or batana tha k ham project manager hony k hawaly sy aik bara project banany k liy kia steps le gy_____ 5 marks.

Project manager has to do. These are:

- **WHY** is the system being developed?
- **WHAT** will be done?
- By **WHEN**?
- **WHO** is responsible for a function?
- **WHERE** they are organizationally located?
- **HOW** will the job be done technically and managerially?
- **HOWMUCH** of each resource (e.g., people, software, tools, database) will be needed?

is k ilawa, hwww kis ka aabriviati on ha_____2 marks

Tss ka pucha hua tha jis ma casual, structured or srtics k ragor degrees btani thi____3 marks.

Measure and Metric ma difference_____2 marks.

Metrics ARE measurements."Metrics" and "measurements" can be viewed as different entities.

- A measure is a numerical value assigned to an attribute according to defined criteria, for example, one's current temperature in degrees Fahrenheit. On the other hand, a metric is a mathematical set of relevant, quantifiable, attributes (measures) taken over time. In this example, the metric would be a table or graph of one's temperature taken over a period of time, which would be helpful for identifying trends.
- A measurement is an indication of the size, quantity, amount or dimension of a particular attribute of a product or process. For example the number of errors in a system is a measurement. While a metric is a measurement of the degree that any attribute belongs to a system, product or process. For example the number of errors per person hours would be a metric.

Feasibility k any 3 dimensions _____ 3 marks

Technology

- Is the project technically feasible?
- Is it within the state of the art?
- Can defects be reduced to a level matching the application needs?

Finance

- Is it financially feasible?
- Can development be completed at a cost that software organization, its client, or the market can afford?

Time

- Will the project time to market beat the competition?
- Can we complete the project in the given amount of time?

Resources

- Does the organization have resources needed to succeed? The resources include:
 1. 1. HW/SW tools
 2. 2. Reusable software components
 3. 3. People

is sy ziada ni yad mujy ____

mujy laga tha k paper mushkil ay ga bt paper easy tha bht, objective 50 % past papers sy i baki ap ki tiari p depend krta ha, wesy paper bohot easy tha.

BEST Of LucK!!!!!!!!!!!!!!!!!!!!!!

Today CS605 Midterm Term Paper

Total Question = 26

Total Mcqs of 1 marks of each = 20

Total 2 Marks Question = 2

Total 3 Marks Question = 2

Total 5 Marks Question = 2

Q: What do you understand by the term Risk?

Risk is the situation that can be defined as what can go wrong it is the possibility of loss.

Risk may or may not happen this is uncertainty of Risk but when risk occurs or it becomes reality then loss may occur.

Q: What is RMMM Stands for ?

Ans :

It stands for Risk Mitigation, Monitoring and Management plan.

Q: What if as a PM while developing a software you encounter a situation when ripple frequency becomes too large then what will be its effect on software quality ?

Ans : Software Quality assurance is really very important in this situation when ripple frequency becomes too large then there will be effect of tight coupling (tight coupling will be present) hence the design is not maintainable. So the software will become not maintainable and in what result software quality may decrease.

Q: What is the major defiance between Rapid Prototyping model and RAD model?

Ans : RAD model is applicable when requirements are fully understood and certain and Rapid prototyping model is applicable when requirements are uncertain.

Q: Define Schedule Risks

Ans : The degree of uncertainty that schedules are maintained. Product schedule will be maintained

Exposure to loss from a **program** not **meeting** its **scheduled objectives**.

Schedule risk is the risk that the project takes longer than scheduled. It can lead to cost risks, as longer projects always cost more, and to performance risk, if the project is completed too late to perform its intended tasks fully. Apart from the cost estimation and resource allocation used in CPM, most of the techniques used in quantitative cost risk analysis are different from those used in schedule risk analysis.

Q: Write uses of Control Charts

Ans : Control charts are statistical technique used to determine the process is in control or out of control.

There are many uses of the control chart and many benefits.

- 1) Control charts are a proven technique for improving productivity
- 2) Control charts are effective in defect prevention
- 3) Control charts prevent unnecessary process adjustment
- 4) Control charts provide diagnostic information
- 5) Control charts provide information about process capability.

CS605 Software Engineering 2

70 % MCQs was from past papers and quizzes

Subjective Part:

Two Characteristics of Risk

A risk has two characteristics:

- Uncertainty – the risk may or may not happen
- Loss – if the risk becomes a reality, unwanted consequences or losses will occur.

Difference between measure and metric repeat

Proactive and Reactive Approach of Risk management

There are two basic risk management philosophies, reactive and proactive.

• Reactive – Indiana Jones school of risk management

– Never worrying about problems until they happened, and then reacting in some heroic way – Indiana Jones style.

• Proactive

– Begins long before technical work starts

– Risks are identified, their probability and impact are analyzed, and they are ranked by importance.

– Risk management plan is prepared

1. Primary objective is to avoid risk
2. Since all risks cannot be avoided, a contingency plan is prepared that will enable it to respond in a controlled and effective manner

Build or Buy, Diagram was given, we have to identify either to build or buy?

Page 83

Usability ke mutaliq question tha ke usability use karein maximum to konsy factors mutasir hoty hain

Aur aik question 5 marks ka given scenario tha.

my cs605 paper

20 mcqs

1. **1. Control chart related Q if 8 consecutive value lies on one side of Am then project condition?**

The process is out of control.

1. **2. Define compartmentalization?**

• Compartmentalization

The project must be compartmentalized into a number of manageable activities and tasks. To accomplish compartmentalization, both the product and process are decomposed.

1. **3. Measure and metric and their difference**

repeat

1. 4. Define feasibility assessment

The purpose of the feasibility analysis is to determine can we build software to meet the scope?

1. 5. Buy verses build

It is often more cost-effective to acquire than to build. There may be several different options available. These include:

1. Off-the-shelf licensed software
2. Software components to be modified and integrated into the application
3. 3. Sub-contract

my today paper

page 71 pe jo lack of ambiguity ka formula hy wo nikalna tha...values di hoi thi...5 marks

ek question buy vs build se tha...

Paper was easy.

20 mcqz .. 2-4 from past remaining logically new..

Why we need measure metric?

Software metric relates individual software measures to provide a normalized view. For example, defects per function point are one metric which relates two individual measures, that is, defects and size, into one metric.

Defects removal efficiency se scenario tha given.

Structure and casual difference

• Casual

All process framework activities are applied, but only a minimum task set is required. It requires reduced umbrella tasks and reduced documentation. Basic principles of SE are however still followed.

• Structured

In this case a complete process framework is applied. Appropriate framework activities, related tasks, and umbrella activities (to ensure high quality) are also applied. SQA, SCM, documentation, and measurement are conducted in streamlined manner.

Reactive and proactive risk se q tha .. Which is preferable?

Unfortunately, Indiana Jones style is more suitable for fiction and has a rare chance of success in real life situations. It is therefore imperative that we manage risk proactively.

Measure quality of software requirement specifications?

The quality of the software specification is of extreme importance as the entire building of software is built on this foundation. A requirement specification document is measured in terms of lack of ambiguity, completeness, consistency, correctness; understand ability, verifiability, achievability, concision, traceability, modifiability, precision, and reusability.

Question No: 21 (Marks: 2)

What will be implication if feasibility of product collects incorrect?

Question No: 22 (Marks: 2)

If gap between the defects reported and defects fixed is increasing then what will be effect on product?

Product is in unstable condition.

Question No: 23 (Marks: 3)

What is the reason of baseline data?

The metrics baseline consists of data collected from past project over a period of time. To be effective, the data must be reasonably accurate, it should be collected over many projects, measures must be consistent – same technique or yardstick

for data collection should have been used, applications should be similar to work that is to be estimated, and feedback to improve baseline's quality.

Question No: 24 (Marks: 3)

**Differentiate between casual and structured rigor?
repeat**

Question No: 25 (Marks: 5)

In the Human Resources Application have
Personal information
Salary
Course
Training
Identify mandatory and optional subgroups

Mandatory

Personal information
Salary

Optional

Course
Training

Question No: 26 (Marks: 5)

Question about calculation is given related to chapter no 22 Relationship between people and effort

MCQs

1. 1. Which is not object oriented life cycle model? **ANS:** Remember name of object oriented models
2. 2. First published model of software development process was..... **Answer:** waterfall
3. 3. Qualitative feedback of CMM is..... **ANS:** Optimizing
4. 4. are those that the user has the option of using one or none of the subgroups during an elementary process. **Answer:** Optional subgroups
5. 5. In functional point EQ stands for..... **Answer:** External inquiry
6. 6. UNPL stands for..... **Answer:** Upper Natural Process Limit
7. 7. TSS stands for..... **answer:** Task Set Selector
8. 8. is the ability to encourage technical people to produce to their best.
Answer: Motivation
9. Line of code heavily dependent on..... **Answer:** individual programming style page 37
10. Evolutionary model.....
11. A process model defines a task set which comprises of SE work tasks and deliverables. **Answer:** milestones
12. Which is not included in software development loop? **Answer:** Remember name on Page 11
13. structures a team along a traditional hierarchy of authority **Answer:** Closed paradigm
14. Every task or group of tasks should be associated with a project **Answer:** milestones

Subjective :

1. Difference between optional and mandatory. 2marks
2. Every task or group of tasks should be associated with a project milestone. Explain benefit? 2marks

3. Buy vs build. 3marks
4. Benefit of control chart? 3marks
5. Ex of page 89? 5marks

Solution:

Risk:

- Only 70% of the software components scheduled for reuse will, in fact, be integrated into the application. The remaining functionality will have to be custom developed.
- Risk Probability – 80% likely (i.e. 0.8)

Risk impact

- 60 reusable software components were planned. If only 70% can be used, 18 components would have to be developed from scratch. Since the average component will cost 100,000, the total cost will be 1,800,000.

• Therefore, RE = 0.8 * 1,800,000 = 1,440,000

6. HRM was given. We have to tell only which information is optional and mandatory. 5marks

Mcqs 70 % from moiz file...

Subjective was....

1....Write at least one significance of statistical control technique ? 2 marks

2...being a project manager you need to identify a scope of certain project ,but this type of application is taken 1st time your company,which technique is used

For software scope correctly? 3 marks

3.....Do you think that the buy approach always work as compared to build approach ,give reason? 5 marks

4...In software applicationhaving same size in function point unit may have different

Line of code,give reason? 5 marks

2 question ni yad but wo easy thy boht

All MCQs From Moaaz, Waqar Sidhu file and CS605_currentpaper_28-05-16 file

Q. List at least one advantage of using statistical control techniques in software engineering (2 marks)

Q. Suppose a project to consist of three components i.e.

Login- Component, Filter- Component, Transfer- Component.

Calculate the overall Projects system complexity from the following data (5 marks)

Component	Structural Complexity	Data Complexity
Login- Component	1	1
Filter- Component	2	1
Transfer- Component	1	1

aoa....\

mostly mcqs from moaz fil.....

type of reviews (2)

MTTF = 48, MTTR = 4, calculate availability? 5 marks

Answer:- MTBF = MTTF + MTTR = 48+4 =52 Availability = (MTTF/MTBF) x 100 = (48/52) x 100 = 92.30

ak question tha 5 marks ka ... k agr ak telecom company new product launch rkti hai to as risk analyst apko report bnani ha us ma kon sa risk mention kry gy::?? (5)

Q:How Continuous representation can help pakistani environment?(5)

requirement attributes(3) type any 6

Answer: - (Page 127) We need to tag requirements with certain attributes in order to manage them in an orderly fashion.

Attributes are used to establish a context and background for each requirement. They go beyond the description of intended functionality. They can be used to filter, sort, or query to view selected subset of the requirements. A list of possible attributes is enumerated as below: 1. Requirement ID 2. Creation date 3. Created by 4. Last modified on 5. Last modified by 6. Version number 7. Status 8. Origin 9. Subsystem 10. Product Release 11. Priority

bsss ore kch yad nahi aa rha

MY PAPER

Q#1 Difference between Generic risk and product risk ANS page#86

Q#2 Difference between Casual Rigor and Structured Rigor ANS page#96

Q#3 BCWP=3

ACWP=3

FIND VALUE OF CPI ?AND CONCLUDE THAT PROJECT IS WITHIN BUDGET OR NOT? ANS PAGE#102

Types of reviews ANS page#110

Function of ECO ANS page#124

How CSR is imortant in change control ANS page#126

Legacy system assesments Ans page#135

When a system calls legacy system Ans page#134

Application software assesments any two Ans page#137

Reverse Engineering Ans page #139

How large classes and duplicate codes are bad smells? Ans page #143

Ereq se related tha ak question Ans page#104

MY TODAY PAPER

2 marks

i)Types of reviews?

ii)“Baseline requirement affects its traceability” agree Or Not?

iii)List two Parameters for accessing the “Application Software” component of legacy system.

iv)Two Advantage of Task Network?

3 marks

i)For a nuclear reactor control system,identify two catastrophic nature technical risk

ii)“Occurance of Software failure does not necessarily result in hazards or mishap” agree or not?

iii)If requirement are not traceable,what wil be the impact on requirement management?

iv)“In reverse engineering,we move from lower abstraction to the high abstraction level” agree or not?

5 marks

i)Maintenance Find ?

ii)

BCWP=3

ACWP=3

Find CPI=?

iii) Being a software engineer,suppose you take a concept development project,list some of task that you will perform to implement project.

GOOD LUCK AIL OF YOU

Today My paper (CS609) at 2 PM

Write 2 points about low level and quick formatting (5)

Write a procedure convert cluster into sector # (5)

Structure of data part of partitioning table (5)

How DMA work in block transfer mode (3)

Determine from partitioning table data part that partition is bootable or not? (3)

How content of small and large file are managed in MFT (3)

Which register is used for Memory to memory transfer ?

Difference between COM and Exe? (2)

What is the sector # for the following cluster

1CH? (2)

Difference between sector and track (2)

mcQs mostly from moaz file

does software Quality depends on source code?(2)

if you are working as a project manager and you need to estimate the size of the project

you need to use the technique which will consider the extend use point of view .which technique will use ? (3)

two software application having same size in function point unit many have different number of line code ? agree or not? (5)

do you think that buy approach always works as compared to build approach ? (5)

Mcqs 20 sy 25 aye thy moaz sy

SCI ka abbreviation?

Formal view ki types?

Being a software engineer, suppose you take a concept development project, list some of task that you will perform to implement project. 5 marks

ANSWER=Size of product, Number of Users, Business Criticality, Longevity, Stability of requirements, Ease of communication,

Maturity of technology, Project Staffing,

Defect removal efficiency, find krna tha? is formula sy $DRE = E / (E+D)$,...

Difference between Generic risk and product risk ANS page#86

Generic risks are threats to every project whereas Product specific risks are specific to a particular project

My today's cs605 paper at 8am

MCQ's almost 80% FROM MOAAZ FILE and Subjective 6 to 7 questions from moaz subjective file

1. components of legacy system

2. Why the "Large classes" and "Duplicate code" are considered as bad smell give at least one reason for each?

Answer: (Page 143)

Large classes try to do too much, which reduces cohesion.

If you modify one instance of duplicated code but not the others, you (may) have introduced a bug!

3.

formula for MTBF. (2)

Answer: (Page 116)

$MTBF = MTTF + MTTR$

4. two major drawbacks of nuclear (aesa tha question)

5. do you think that a long parameter list of a function/method can be a 'bad smell', give reasons to support your answer? (3)

Answer:- (Page 143)

Long Parameter List hard to understand, can become inconsistent

6. mtbf k elawa DRE ka formula

7. availability ka formula pocha tha

moaz ki file kr la in bss

best of luck!

today cs605 paper

do u agree that requirement errors are most common but most costly to fix ? yes or no

name two techniques that used after task network ans is pert and cpm

write the advantages of requirement attributes like requirement status etc

in which case when u want to maintain your legacy system instead of moving to modern systems.

software engineer do technical work in quality control? explain

how long methods can be bad smell explain?

what is message chain ?

CS605 Software engineering II

2 marks questions

Parameters of application software

Types of reviews ANS page#110

Is it effective to assign a release number to each and every release?

Define effort validation

3 marks questions

Occurrence of a software failure does not necessarily result in hazard or mishap?

In reverse engineering, we move from lower abstraction level to higher abstraction level, do you agree or not? Give reason for your answer.

Software configuration management is a design activity". Do you agree or not? Provide at least one reason to support your answer.

Difference between Casual Rigor and Structured Rigor ANS page#96

5 marks questions

Defect removal efficiency, find krna tha?is formula sy $DRE = E / (E+D)$,...

Objectives of project manager

Name two factors that made it difficult to develop a traceable requirement and specification. Explain also

Long methods cause bad smells. Explain
